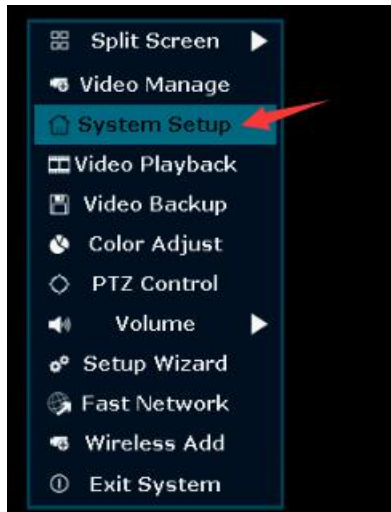


How to revise the system time (NVR):

There are two ways to set the system time: 1)Enable "sync time" 2)Revise manually

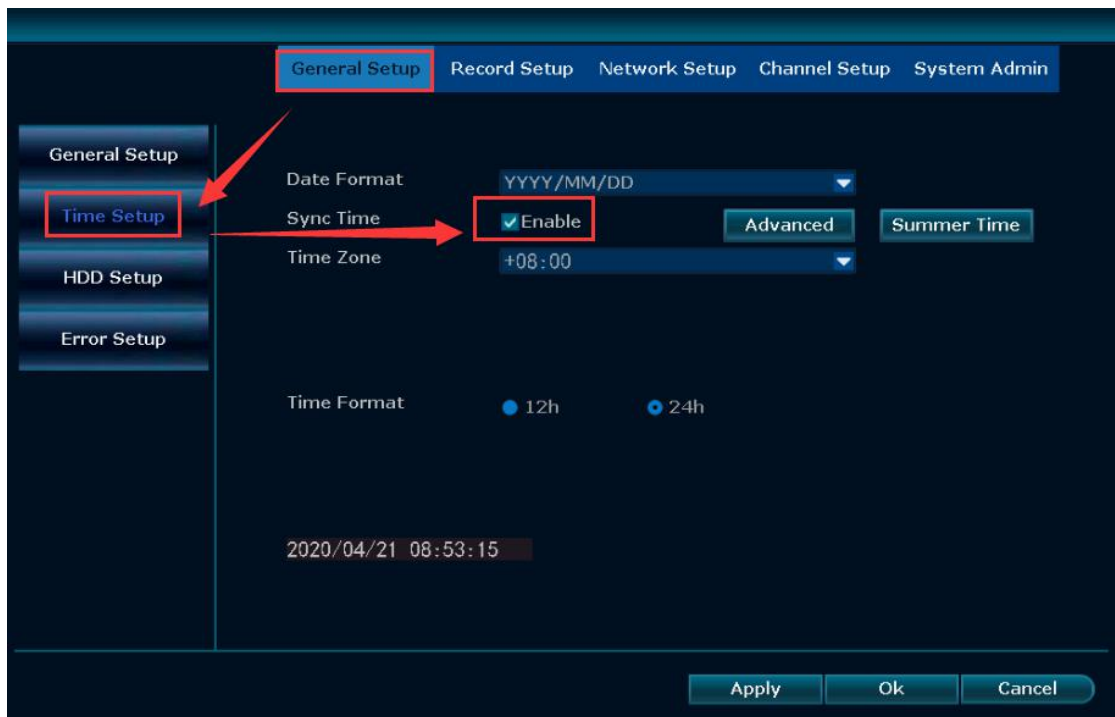
1.Enable "sync time"

- (1) Operate on your NVR locally -- Right Click -- Click "system setup"



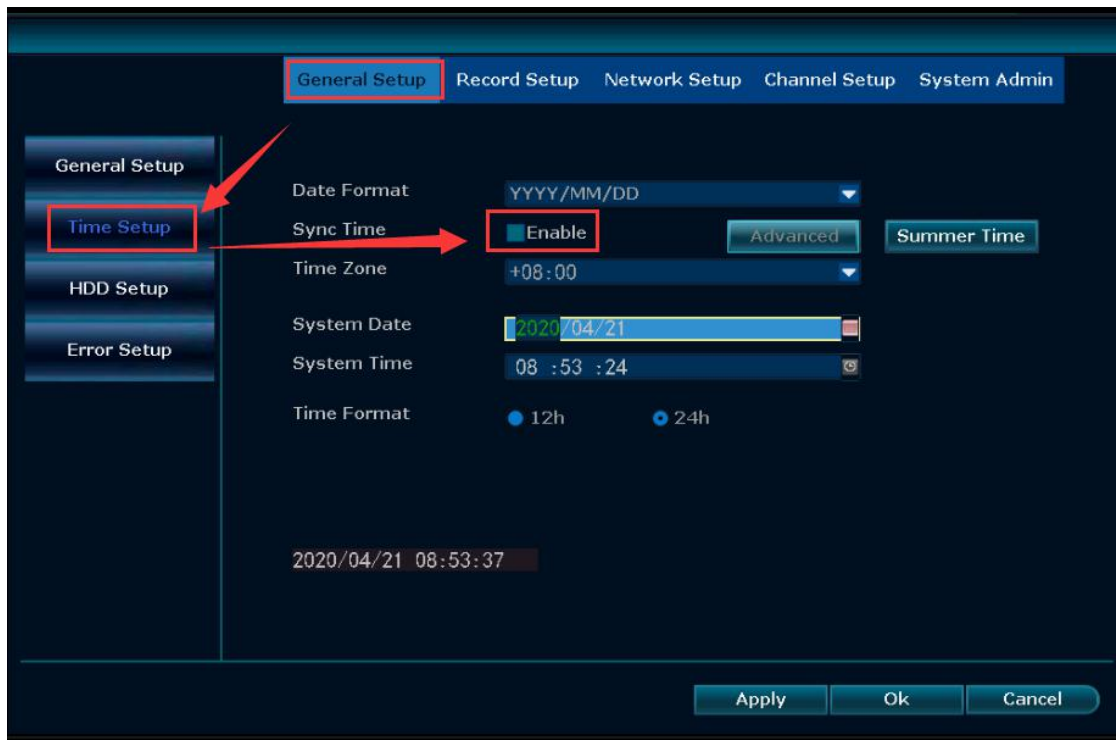
- (2) General setup -- time setup -- check "sync time"

(After the NVR is connected to the network, the time will be automatically corrected, please note: NVR has to be connected to the Network)

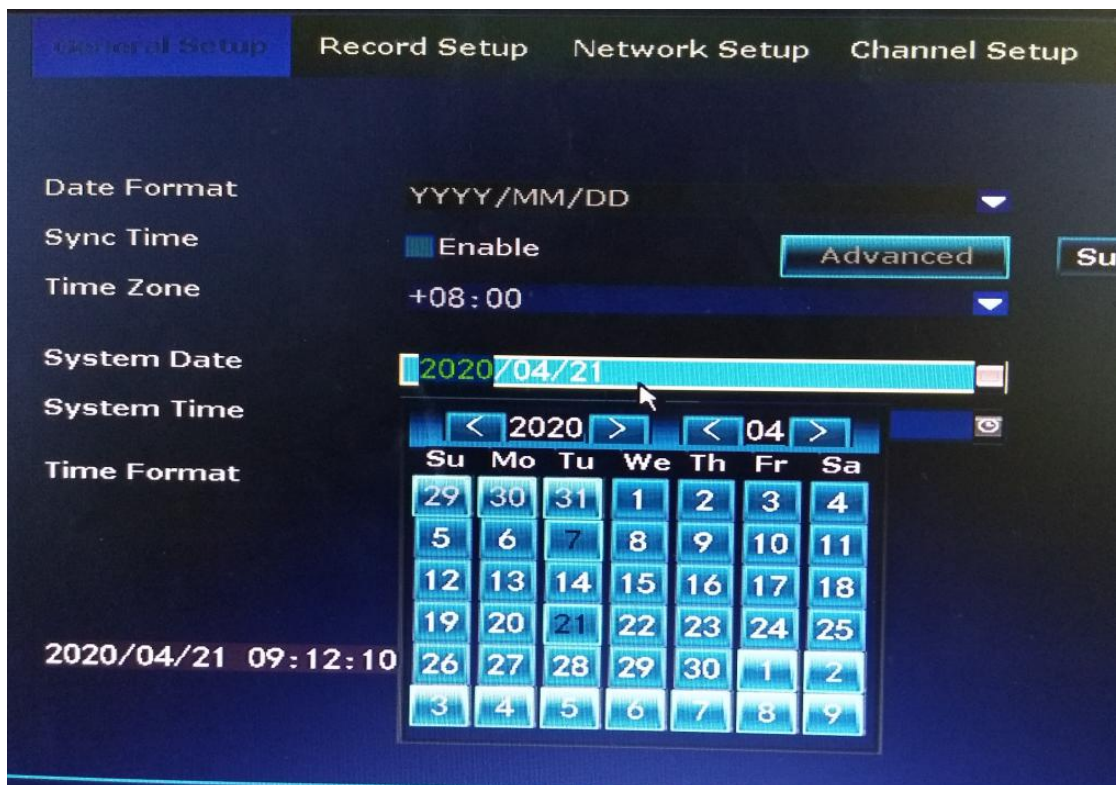


2.Revise manually

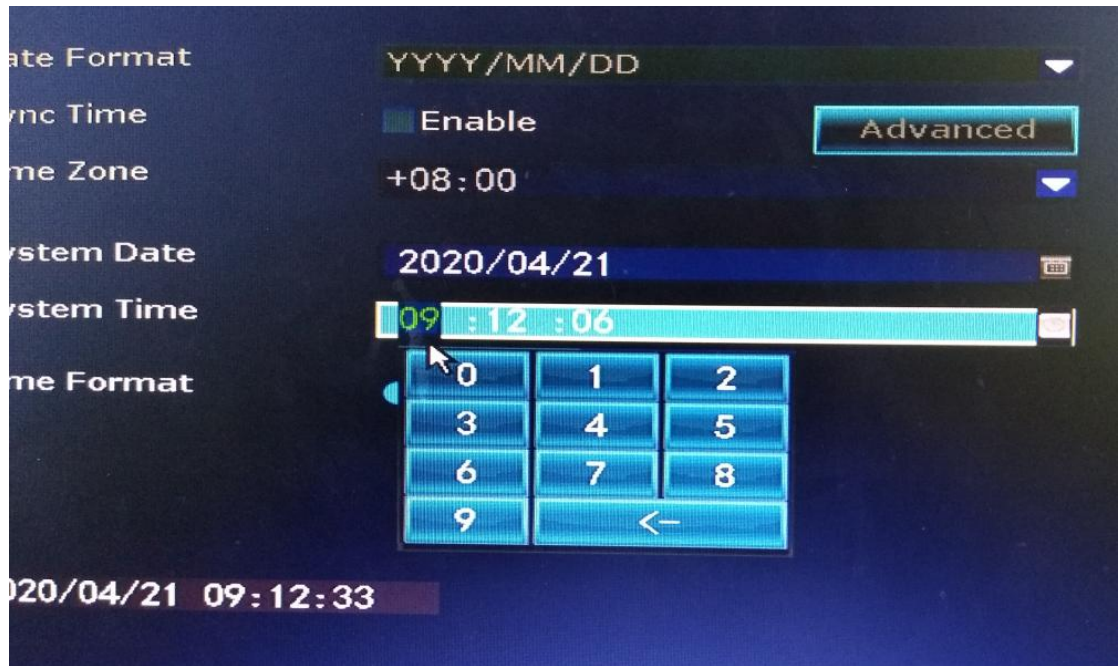
- (1) General setup---time setup, don't check "sync time"



- (2) Double click "system date", select the correct time



- (3) Double click "system time". select the correct hours, minutes and seconds



(4) Click "apply" to save

