

How to setup APP notification and IPC camera siren alarm?

When motion detection is triggered, there are 5 types notification:

Buzzer: NVR will beep when alarm is detected

E-mail Notice: you will receive an email alert

APP Alarm: you will get a phone app notification push (text message, no image)

IPC Alarm: you will hear siren alarm from camera side

Full Screen: The monitor will show full screen

We suggest you select t APP alarm so you can have real time responses to what happens.

① If you want to set up APP alert, please follow below steps:

① Make sure the NVR is ONLINE status

Please see the network status in the lower right corner of the monitor.



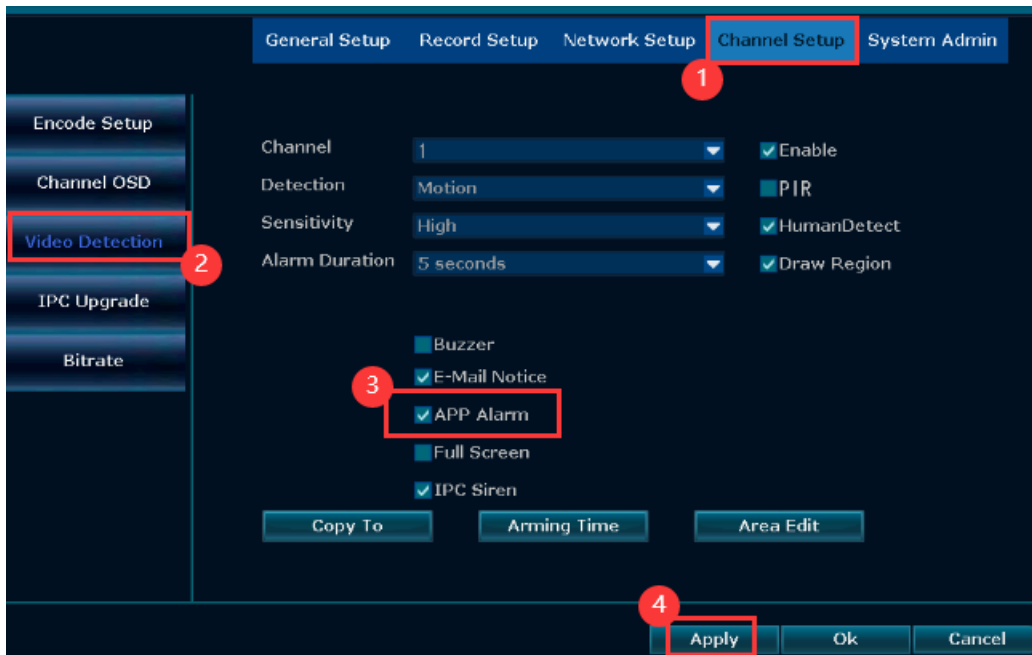
"Offline"



"Online"

② Enable motion function and check "APP Alarm"

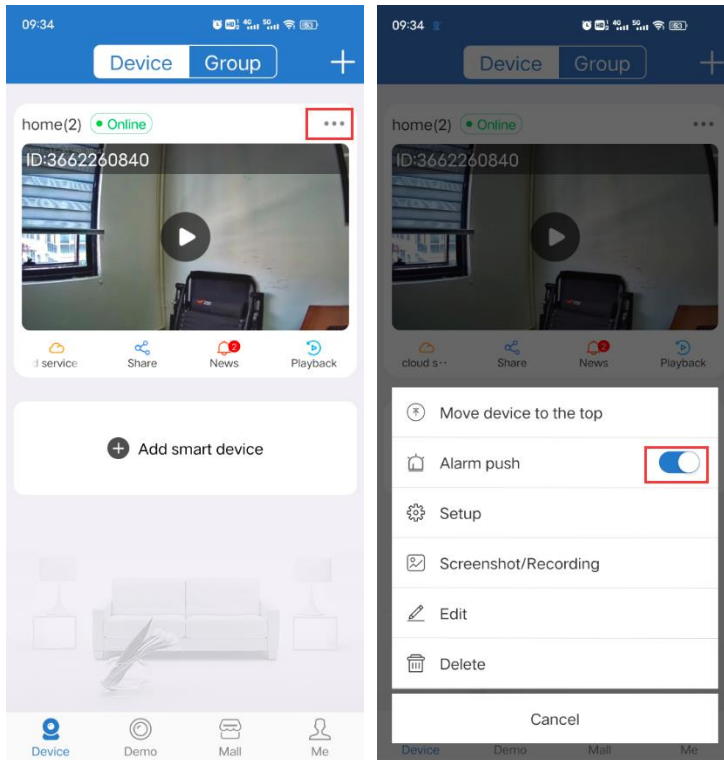
Right click mouse to enter menu "System setup" > Channel setup Video detection > Choose channel > Enable motion > check "APP Alarm" > click "Apply" and "OK" to save the setting.



③ Set up phone app notification

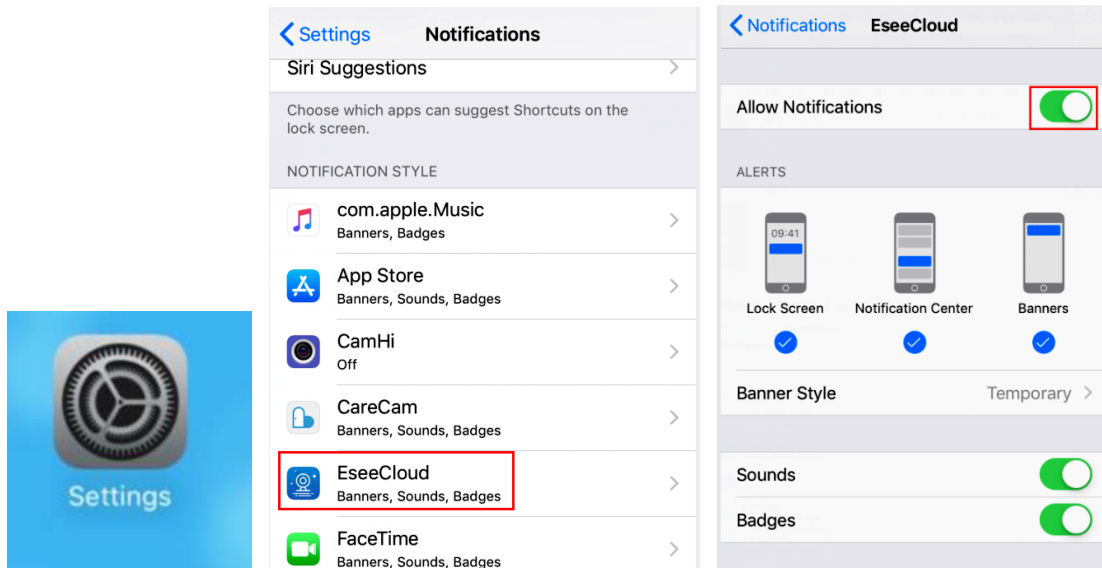
A Make sure to allow APP to receive alarms. Login in your mobile app account, find [Me] in the bottom of your app--->tap [Setting] --->turn on [Push notification]

B Make sure the device Smart detection is turned on. Login in your mobile app account, find [...] in upper right corner of your app--->turn on [Alarm push].



Ⓒ Make sure the phone allows the APP to receive alarms. Enter phone [Setting]---

[Notifications] --->find the “EseeCloud” APP --->turn on [Allow Notifications].



Ⓓ If you want to turn off Siren Alarm from camera side, please follow below steps:

Right click mouse to enter menu “System Setup”> Channel Setup> Video Detection> select Channel > disable"IPC Alarm"> Click"Apply"to save the setting.

Note: the default channel is channel "1", if you need to setup other channels, such as channel "2-8". Please repeat above steps or click "Copy to".

