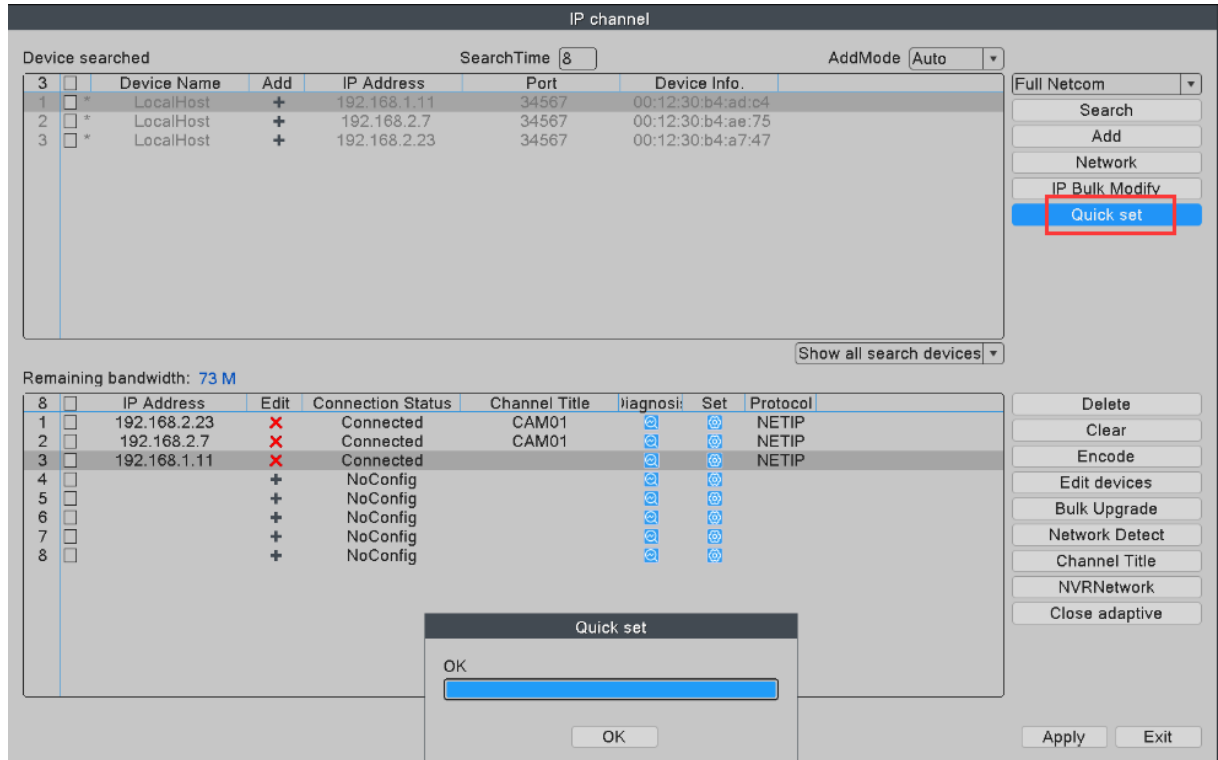


12. How to add a new camera or replace defective camera?

- 1 Please connect camera to NVR box via Ethernet cable, make sure camera and NVR are powered.
- 2 Right-click mouse navigates to **Quick Set** (Normally NVR will be configuring automatically).



- ◆ If your camera still not connected, please manual add as bellow.
 - a Click "Search", NVR will search camera with same IP segment, then select the new camera's IP address.
 - b Select an empty channel for the new camera(For example #3), then click "Add".
 - c After configuration successful, click "Apply" to save settings then click "Exit".

IP channel

Device searched SearchTime AddMode

	<input type="checkbox"/>	Device Name	Add	IP Address	Port	Device Info.
1	<input checked="" type="checkbox"/>	LocalHost	+	192.168.1.11	34567	00:12:30:b4:ad:c4
2	<input type="checkbox"/>	LocalHost	+	192.168.2.7	34567	00:12:30:b4:ae:75
3	<input type="checkbox"/>	LocalHost	+	192.168.2.23	34567	00:12:30:b4:a7:47

Full Netcom

Remaining bandwidth: 76 M

	<input type="checkbox"/>	IP Address	Edit	Connection Status	Channel Title	Diagnosi	Set	Protocol
1	<input type="checkbox"/>	192.168.2.23	✗	Connected	CAM01			NETIP
2	<input type="checkbox"/>	192.168.2.7	✗	Connected	CAM01			NETIP
3	<input checked="" type="checkbox"/>		+	NoConfig				
4	<input type="checkbox"/>		+	NoConfig				
5	<input type="checkbox"/>		+	NoConfig				
6	<input type="checkbox"/>		+	NoConfig				
7	<input type="checkbox"/>		+	NoConfig				
8	<input type="checkbox"/>		+	NoConfig				

◆ If "connected status" shows wrong password, please select the camera, click "Edit devices" and enter the correct password of the camera .